



European Institute of  
Innovation & Technology

# 1st Workshop

## Raw Matters Ambassadors @ Schools 3.0

Jun 26-27, 2018  
Lisboa



Visiting address:

Faculdade de Ciências e Tecnologia  
Monte de Caparica  
2829-516 Caparica

## Raw Matters Ambassadors @ Schools 3.0 AGENDA

**Jun 26-27, 2017**

### **First RM@Schools 3.0 Workshop**

#### **Tuesday 26, 2018**

*Focus on the RM@Schools' results obtained up to now and the future planning*

- ✓ **9:30h**      **Participants Registration**
- ✓ **9:40h**      **Welcome - João Pedro Veiga**
- ✓ **9:50h**      **Overview of the Project Results and objectives to reach until 2018- Armida Torreggiani - CNR (IT)**
- ✓ **10:10h**     **2018 RM@Schools 3.0 Activities Reporting** (involved Schools, visits to companies, development of toolkits and corresponding supporting materials, participation and/or organization of events, planning of new events , etc)

Focus on the RM@Schools' results in 2018 & sharing experiences/comments/challenges

15 min each one:

**Stichting Wetsus - Marco de Graaff & van Dalfsen**  
**KTH - Royal Institute of Technology - Kerstin Forsberg,**  
**University of Milano- Bicocca - Simona Binetti**  
**ISTM- CNR – Milan – Raffaella Soave**  
**Montan-universitaet Leoben - Ulrike Haslinger**

- ✓ **11:15h**     **Coffee break**
- ✓ **11:30h**     **Universidad Politecnica de Madrid - Liliana Medic Pejic**  
**CNR Bologna – Annalisa Aluigi**  
**Geological Survey of Sweden - Pontus Westrin**  
**Tallinn University of Technology- Veiko Karu**  
**University of Liege (ULg), Réjouissiences - Martine Vanherck**  
**Faculdade de Ciências e Tecnologia, Lisboa - João Pedro Veiga**  
**Politecnico di Milano - ?**  
**CEA - France?**  
**Technische Universität Clausthal -?**
- ✓ **13:10h**     **Lunch**

- ✓ **14.10 h** **Fraunhofer Institute** - *Beate Brede*  
**RWTH Aachen University** - *Lea Marleen Daling*  
*Briefly GEOLOGICAL SURVEY OF SLOVENIA –Armida on behalf of Kim*  
*Briefly Bay Zoltán Nonprofit Ltd. – Armida on behalf of Patricia*
  
- ✓ **14.40h** **Overview on the RM@School Web site and Virtual Centre** - *creation of Learning materials for teachers/RM Ambassadors and how to communicate the info* - *Alessandra Degli Esposti – CNR*
  
- ✓ **15.10h** **Social Networks** -*what it is important to know and how to insert the news* - *Veiko Karu*
  
- ✓ **15.40h** **Coffee break**
  
- ✓ **16.00h** **Example of good practices for engaging pupils in communication activities:** *involvement of Students in public Events* - *Annalisa Aluigi*
  
- ✓ **16:20h** **OPEN DISCUSSION** : *partners’ feed-backs, weaknesses of the project, strengths factors, Difficulties met during the last months etc...*
  
- ✓ **17:00h** **Closing**

**Dinner** together

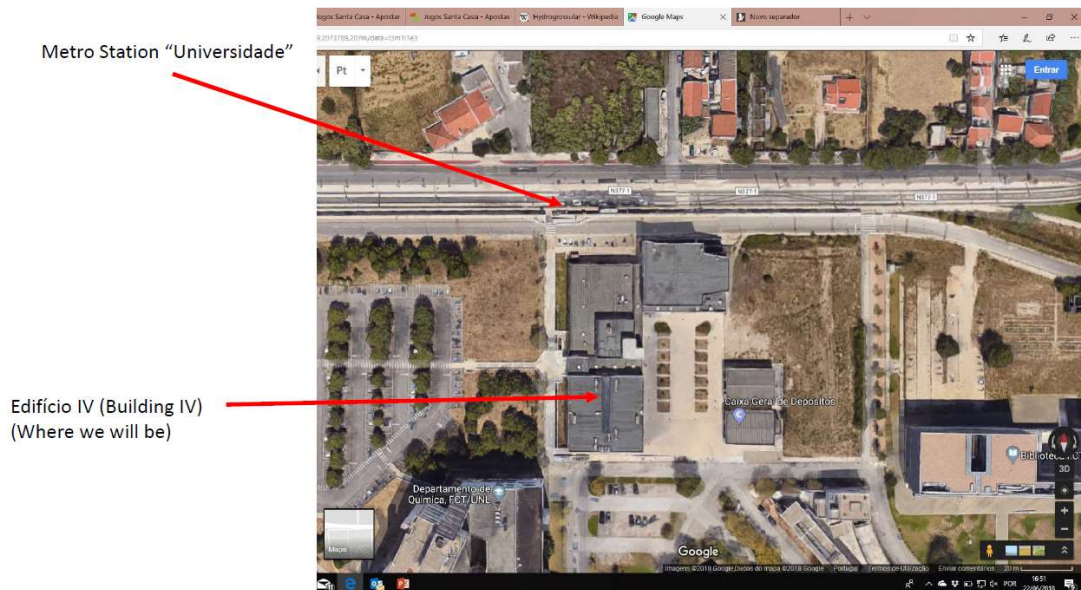
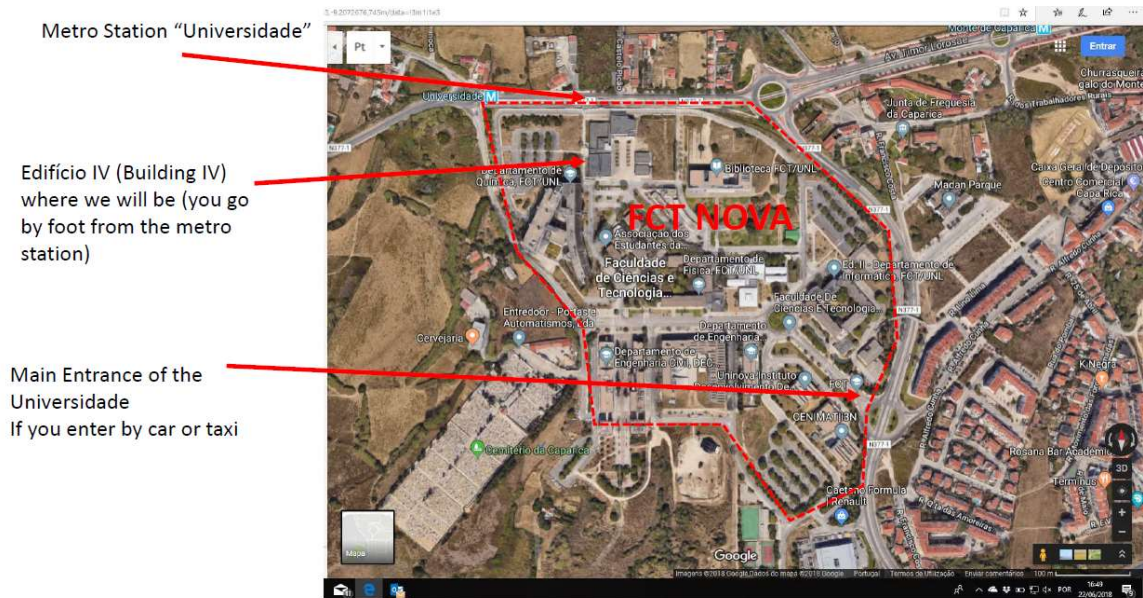
**Wednesday Jun 27, 2018**

*Planning of the activities in 2018 and discussion on the RM@Schools' prospectives and sharing experiences/comments/criticities*

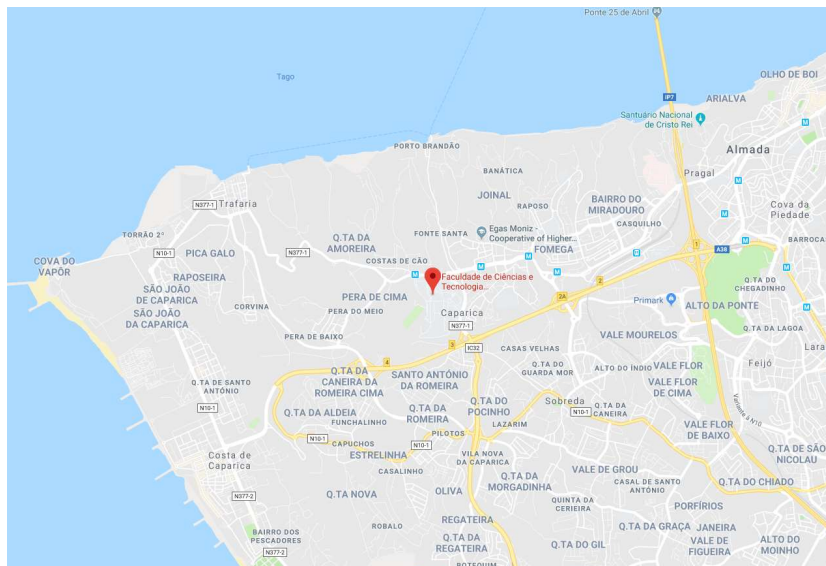
- ✓ **9:30h**      **Planning of the 2018 activities: and** - *Armida Torreggiani – OPEN DISCUSSION*
  - how to prepare documents for the performance reporting
  - how to use Blue Book
  - *Another way to collaborate: Open Doors Days (Hosting classes from other partners 'Countries for one-day activity)*
  - *Development of the local networks: Involvement of companies*
  - *Next events :*
    - Science Fair in The Netherlands in September*
    - Event in Slovenia at the beginning of October*
    - participation of delegates (Students and teachers) to the annual European conference in Bologna*
  
- ✓ **10:00h**      **Train the trainers and How to improve our toolkits?** - *"guideline" for the ambassadors to produce didactical material for the toolkits - Beate Brede*
  
- ✓ **10.30h**      **Coffee Break**
  
- ✓ **10.50h**      **Train the students to become Young RM Ambassadors – suggestion to become a good science communicator** - *Lea Marleen Daling*
  
- ✓ **11.20h**      **Train the RM Ambassadors: short workshop on Better Geo** - *Pontus Westrin*
  
- ✓ **12:30h**      **Closing**

## GENERAL INFORMATION

### How to reach us:

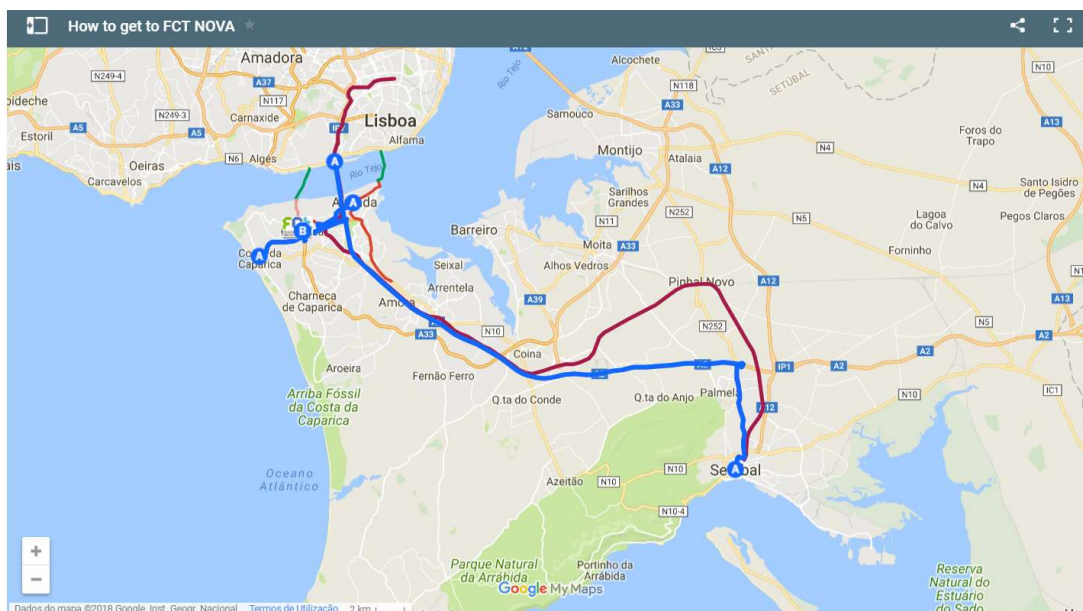


## How to get to FCT



The *campus* is served by a wide transport network, including combined services (bus, train, ferry) and by tram, which terminus ("University") is located along one of the FCT entrances.

<https://www.fct.unl.pt/en/about-fct/how-get-fct>



Here are some suggestions, although there are other possibilities, combining public transportation.

### From Lisbon (Portela Airport)

#### Using public transportation

There is a special shuttle bus (Carris nr 91), that takes passengers to Lisbon downtown in 20 minutes. This bus also stops at “Cais do Sodré” Train Station, next to the Ferry Station, where you can take a ferryboat to “Cacilhas”. Once in “Cacilhas” you can take a tram to “Universidade”, hopping off on its terminus (located near one of the campus entrances).

In Cacilhas you can also take one of the following TST buses: “Marisol”, “Fonte da Telha” or “Costa de Caparica – via Almada”. They all stop next to the FCT main entrance.

(In the airport there are other town bus lines: 5, 22, 44, 45 and 83 to Lisbon).

#### By Taxi

There are always plenty of taxis at the Arrivals and Departures Halls. All the taxis have meters, a ride to FCT NOVA costs approximately €30, depending on the traffic. During weekends, nights, and holidays there is a 20% surcharge.

### From Lisbon (Praça de Espanha)

#### By car

Follow the directions to “A2 Sul”. Cross the “25 de Abril” bridge towards south (“Sul”), take the first exit after the bridge, entering the expressway to Caparica (IC20), follow the sign “Universidade”.

#### Using public transportation

You can use the TST bus to “Costa da Caparica” and get out at the bus stop located right in front of FCT main entrance.

### From Lisbon (Cais do Sodré)

#### Using public transportation

In the “Cais do Sodré” Ferry Station, you can take a ferryboat to “Cacilhas”. Once in Cacilhas you take a tram to “Universidade”, hopping off on its terminus (located near one of the campus entrances).

In Cacilhas you can also take one of the following TST buses: “Marisol”, “Fonte da Telha” or “Costa de Caparica – via Almada”. They all stop next to the FCT main entrance.

### *From Lisbon (Santa Apolónia Train Station)*

#### Using public transportation

Metro to “Amadora Este” (blue line), get out in “Jardim Zoológico” station. Take the Fertagus train to “Coima” or “Setúbal” and get out in “Pragal”. Once there, take the tram to “Universidade”, hopping off on its terminus (located near one of the *campus* entrances).

#### By Taxi

There are always plenty of taxis outside the station. All the taxis have meters, a ride to FCT NOVA costs approximately €25, depending on the traffic. During weekends, nights, and holidays there is a 20% surcharge.

### *From Lisbon (Belém)*

#### Using public transportation

Take the ferry to “Trafaria”. Once there, take the TST bus to “Cacilhas”, getting out on the bus stop next to FCT.

### *From Costa de Caparica*

#### Using public transportation

Take a TST bus to “Cacilhas – via Almada” and get out in the bus stop right in front of FCT main entrance.

### *From Setúbal*

#### By car

Follow the highway A2 towards Lisbon, take the exit “Caparica” (before the “25 de Abril” bridge), entering the expressway to “Caparica” (IC20), follow the sign “Universidade”.